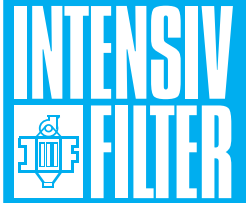


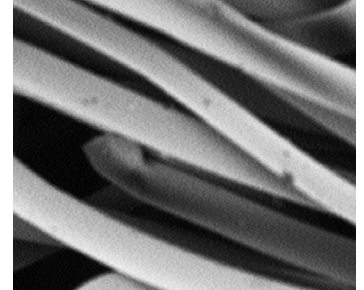
ProTex

Energy saving filter media

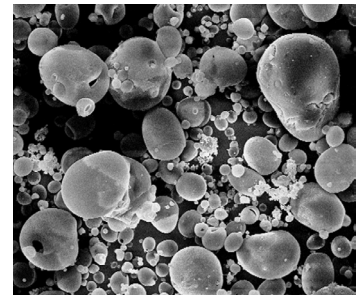


Increase energy efficiency using ProTex filter media

Filtering emissions is the task Intensiv-Filter has been addressing itself to since its founding in 1922. We are a leading specialist in filtering installations in the international markets. This applies both to new installations as well as conversions for a wide range of applications.

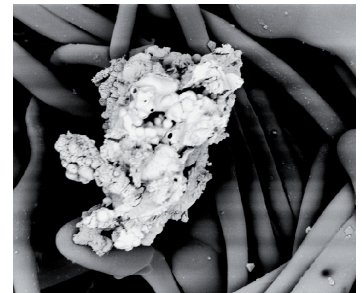


Besides the filtration features required, saving energy is the priority in the development of ProTex filter media. The pressure drop of the filtering installation and therefore the demand of energy are reduced when using ProTex filter media. New installations as well as existing installations, in which a change of filter bags is necessary, can be equipped with filter bags of the new ProTex quality.



Your benefits:

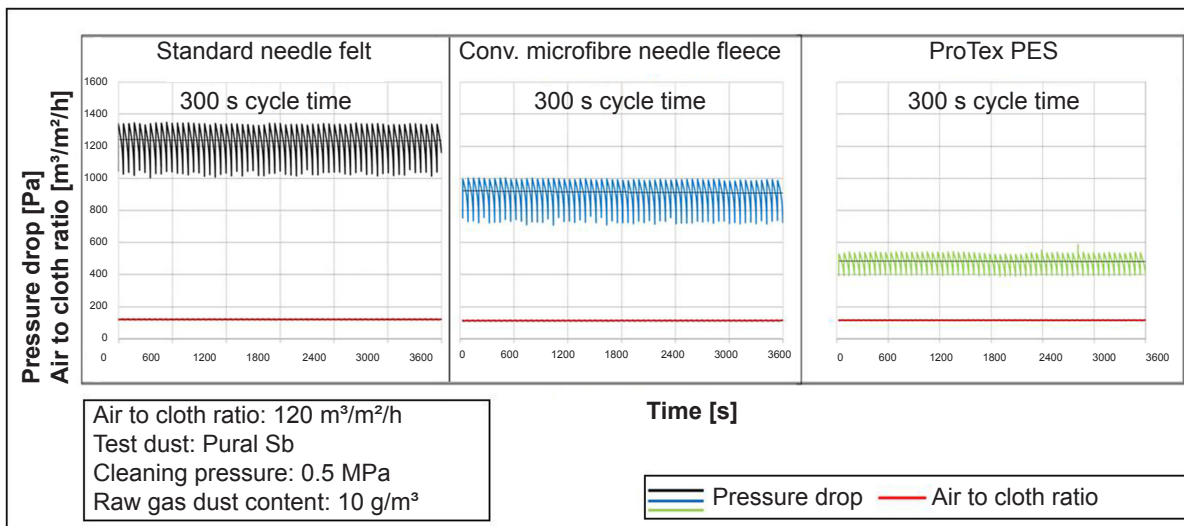
- ProTex significantly reduces the energy demand of your installation by:
 - optimised surface filtration
 - improved regeneration properties
 - minimized pressure drop
- ProTex lowers CO₂ emissions
- ProTex reduces your dust emissions far below the legal limits
- ProTex is characterized by a long lifetime
- ProTex is the economical alternative to filter bags with laminated membrane surface and considerably more robust



ProTex is your solution and our initiative on the way to energy-efficient dust removal



Mighty solutions for tiny particles.



The test results point out the significant increase of the energy efficiency. This has been validated by extensive trials under repeatable test conditions in our filter test center.

Pressure drop reduction

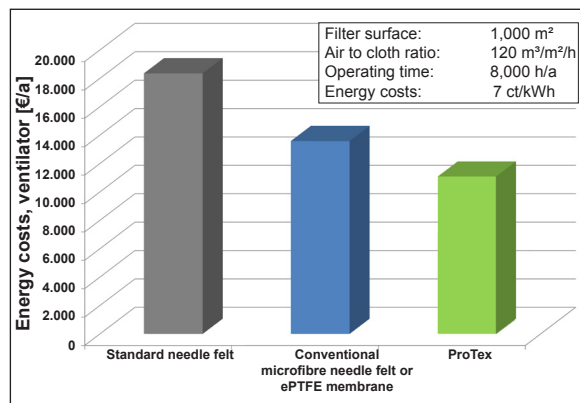
Using ProTex, the filter pressure drop can be reduced by more than half compared to conventional filter media. Based on the entire filtering installation, the guaranteed values for energy consumption and operating costs can be reduced by up to 40 percent.

The use of high quality microfibres and a special needle punching technique guarantee an optimal surface filtration and low residual pressure drop. In addition, the pressure increase within one filtration cycle will be reduced significantly.

Alternatively, the filter system capacity can be increased with ProTex – while investment and operating costs remain the same.

The savings potential

Sample calculation for an installation of the stone/earth industry with fine-particle, mineral dust, based on a filter surface of 1,000 m² and an operating period of 8,000 h/a:



Annual energy savings with ProTex

- Reduction of ventilator energy costs from 18,500 €/a to 11,100 €/a.
- **An annual savings potential of € 7,400**
- Savings of compressed air
- Long lifetime of filter bags
- Reduced maintenance costs

Quality guarantee

We have years of experience with filter media and filtering separators as well as special know-how in regard to selecting filter materials. ProTex filter media are assembled exclusively by Intensiv-Filter at its Langenberg, Germany location. We vouch for the correct fit and highest quality of the filter media.



Intensiv-Filter GmbH & Co. KG
Voßkuhlstraße 63 • 42555 Velbert-Langenberg
Deutschland / Germany
☎ +49 2052 910-0 • 📠 +49 2052 910-248
✉ if@intensiv-filter.com • www.intensiv-filter.com

Technical modifications reserved
PI.09.009 GB • 10.09-1000 FD